



ANNUAL REPORT

2007

February 10, 2008

2201 P Street NW

Washington, DC 20037

(202) 387-6612

www.churchofthepilgrims.org

Church of the Pilgrims Leadership, Staff and Officers - 2007

The Session

The Rev. Dr. Jeffrey K. Krehbiel, Moderator

Calva Leonard, Administration and Finance

Melissa Rosenblatt, Leadership Development

Mitch Fulton, Building

Jonathan Mertz, Membership Development

Nancy Daugherty, Congregational Support

Betty Rudolph, Outreach

Bart Oosterveld, Christian Education

Jean Stewart, Spiritual Development

Charles Briggs, Clerk of Session

The Rev. Ashley Goff, *ex-officio*

The Board of Trustees

Mitch Fulton, President

Calva Leonard, Vice-President/Treasurer

Mary Ester, Secretary

The Personnel Committee

Jeanne Mayer, Chair

Steve Coxe

Calva Leonard

Stacey Pervall

Lynn Wagner

The Pilgrimage Board

The Rev. Ashley Goff, Director

Karen Garrett-chairperson

Mitch Fulton

Shera Jenne

Jeff Pittman

Mary Ellen Player

The Church Staff - 2007

Rev. Dr. Jeffrey K. Krehbiel

Pastor

Rev. Ashley Goff

Minister for Spiritual Formation and Director of The Pilgrimage

Robert Passow

Director of Music

F. Rolando Quintanilla

Superintendent of Buildings and Grounds

Marcia H. Mapp

Church Administrator

Jen McClurg

Program Manager, The Pilgrimage

Paul Reuther

Resident Sexton

Ruben Canadas

Sunday Buffet Aide

Rob Heppenstall

Summer Intern

Rebecca Barloon, Gretchen Daehling, Nataleeja Effimoff, Kelsey Krehbiel

Nursery Aides

Table of Contents

REPORT FROM THE PASTOR	1
REPORT FROM THE MINISTER FOR SPIRITUAL FORMATION	2
THE SESSION	3
ADMINISTRATION AND FINANCE	4
REVENUE VS. EXPENSES	4
TRUSTEES FINANCIAL REPORT	5
STATEMENT OF CASH FLOWS	6
CHART OF SIX YEAR TRENDS	7
CAPITAL CAMPAIGN	8
PERSONNEL COMMITTEE	9
THE PILGRIMAGE	10
CHURCH BUILDING	11
CHRISTIAN EDUCATION	12
CONGREGATIONAL SUPPORT	13
MEMBERSHIP DEVELOPMENT	14
OUTREACH	15
OPEN TABLE	16
WORSHIP & SPIRITUAL DEVELOPMENT	17
DUPONT PILGRIMS' GALLERY	18

REPORT FROM THE PASTOR**REV. DR. JEFFREY K. KREHBIEL**

Looking back on the past twelve months, it has been a year of relinquishment for me as pastor at Church of the Pilgrims– in the very best sense of the word. Leaving on sabbatical for three months required me to let go of day-to-day responsibilities, and trust the leadership of the congregation to others– to Ashley and the Sabbatical Planning Team, to the Session, church staff, and members of the congregation. Coming back has not been an experience of “back to normal” but an evolving process of learning to let go in a positive way.

Ashley’s growing leadership role (captured in the change of her title to “Minister for Spiritual Formation”) is one sign of this shift, but there have been others:

- Margee Iddings’ gifted leadership in leading retreats, adult education, and group process;
- Planning Teams that have helped shape the seasons of Homecoming, Advent, Epiphany, and Lent, as well as the Sabbatical;
- Storytellers in worship who have shared their memories of Connections, Clarity, and Homecoming, their Advent dreams and their Epiphany light;
- Care-givers who organized support for Carol Seppala and other members in need;
- Outreach to the community that is largely conceived, planned, and led by lay-leaders of the congregation, such as the Fall Arts Festival, Open Table, the Habitat for Humanity build in Deanwood Heights, the Pilgrimage Service Day, and our involvement in the Washington Interfaith Network.

The sweep of this energy was crystalized for me on my first Sunday back on July 15, when there was a flurry of activity that I had had no hand in planning: Announcing a Presbyterian vigil for the people of Darfur at the Sudanese embassy; turning out people for a WIN “Action” at Covenant Baptist Church the following night; recruiting extra volunteers to serve at Open Table; welcoming a Pilgrimage group that joined us during worship; inviting people to the art exhibit in the Bird Room.

The lingering impression of that day is of a congregation strong in its identity, mission and purpose, that is primarily focused on the world outside its doors. It’s not that I play no role in shaping this identity, mission, and purpose, but clearly I am not its progenitor. After seven and a half years as pastor, my role is less about pointing the way, and more about galvanizing the congregation’s energy, and letting it loose upon the world. This is how the Spirit of God is at work among us.

For me, this continues to be a deeply fulfilling role among you. My hope for the year to come is that there will be an increasing number of opportunities for further relinquishment– and growth in commitment, leadership, and energy as a result.

REPORT FROM THE MINISTER FOR SPIRITUAL FORMATIONREV. ASHLEY GOFF

The year of 2007 was full of “connections and clarity.” Here are a few moments of connections that we created together and were formed together by the Spirit:

In January, I emailed **Margee Iddings**, asking if she would be my spiritual director and guide me through Jeff’s sabbatical process. Margee agreed and I have been formed by her spirit ever since.

In February, **Carol Seppala’s** lifetime came to an end after a long journey with Alzheimer’s. A group of Pilgrims sat vigil at Carol’s bedside hours before she died and I continue to draw from that experience of emotional intimacy and proximity to dying.

In April, Jeff left for his three month sabbatical. We embarked on our own sabbatical journey with the theme of “**Connections and Clarity.**” In those three months, we heard twenty-four different stories of how Pilgrims are connected to each other, the city, and God’s Global Village, and what those connections help us realize about our faith.

In May, **Martinique Elsa Duran Gigax** confirmed her baptismal vows—surrounded by the power of this community and the creative energy of the Dixie Chicks song, “Taking the Long Way Around.”

In June, we welcomed **Rob Heppenstall**, a rising senior at Davidson College, to be our summer intern. I witnessed, yet again, another young person thrive, grow, and change during our summer internship program. Rob’s first experience at Pilgrims was marching in the **Capital Pride Parade** with the largest Presbytery contingent in recent memory.

Also in June, I led our **Vacation Bible School** with our young kids. Our focus—“Do Not Be Afraid.” For three days, we heard biblical stories about persistence, fear, and trust while eating lots of challah bread smothered with grape juice. I was also honored to officiate the weddings of **Amir Venegas** and **Joanne Leong**, and **Shannon Smythe** and **Michael Fleischman**.

In the fall, I began the process of finding a new Program Manager for The Pilgrimage. After three and a half years, **Jen McClurg** decided it was time to say goodbye. By the time Jen left in December, we had welcomed 1,200 people, or 65 groups, to The Pilgrimage in 2007. Also in the fall, my job title was changed to “**Minister for Spiritual Formation**” to reflect the work we have done together and the work to come.

Cheers to more connections and experiences of clarity.

THE SESSION

CHARLES BRIGGS

One of the Session’s duties, as stated in the Book of Order (PCUSA), is “to lead the congregation continually to discover what God is doing in the world and to plan for change, renewal, and reformation under the Word of God.” To that end, it is essential that each member’s voice is heard, each hope and dream shared as we choose our path into the future.

The leaders you have chosen to lead in the journey are:

Church Administration/Trustee	Calva Leonard ‘09
Church Building/Trustee	Mitchell Fulton ‘09
Congregational Support	Patricia Goeldner ‘10
Educational Opportunities	Anne Womeldorf ‘10
Leadership Development	Melissa Rosenblatt ‘08
Membership Development	Jonathan Mertz ‘09
Outreach	Jeffrey Francisco ‘10
Spiritual Development	Jean Stewart ‘08
Clerk	Charles L. Briggs ‘08

Reflecting the makeup of the congregation as a whole, five of the Elders are women and four, men.

There were eight Stated Session Meetings in 2007. In addition, four special meetings were called: in February to receive new members Jeffrey Fox, David Krone (as an associate member), John Lloyd, Hannah Nutt, and Stacy Jo Pervall; in May to approve letters of transfer for Susan Krehbiel, Robert Huebner, Lanese Jorgensen, Mark and Leigh Anne Fraley, and Robert Coronado; in June to examine and receive a new member Martinique Elsa Duran Gigax by confirmation; and in July to approve serving communion on the first Sunday of the pastor’s return from sabbatical.

The Annual Meeting took place in February. One additional Congregational Meeting was called in December to elect new elders and a trustee, and to revise the pastor’s terms of call.

Pilgrims’ Active Membership Roll now numbers ninety-eight. That includes six new members, three deaths, and six transfers. Among those members, we count nine African Americans, three of Asian descent, two Hispanics, and one Native American, and eighty-three Caucasians.

Each and every one of those members brings a gift to the Church of the Pilgrims, and those gifts add value and vitality to a congregation that, while small, is mighty. We welcome those who would join us as we follow Jesus and invite all people into the circle of God’s grace.

ADMINISTRATION AND FINANCE

CALVA LEONARD

Our total income in 2007 was \$442,135 (57.8% of income was from pledges and other offerings, while 32% was from building income). Total expenses for the year were \$476,159.

2007 BUDGET VS. ACTUAL - 2008 BUDGET

	2006	2007	2007	2008
REVENUE	Actual	Budget	Actual	Budget
Stewardship Pledges	\$200,183	\$215,000	\$215,416	\$215,000
Plate Offerings	40,528	35,000	40,194	35,000
Previous Year Offerings	2,638		50	
Building Users - Monthly	133,036	128,200	132,195	159,880
Building Users - Other	5,975	5,000	9,500	6,500
Pilgrimage				
Reimbursement	29,449	30,450	30,450	32,000
Prior Year/Transfers	2,766	1,500	5,632	2,000
Fall Festival Income	7,190	4,500	8,385	7,500
Interest	324	400	313	400
Total Revenue	\$422,089	\$420,050	\$442,135	\$462,326
	2006	2007	2007	2008
EXPENSES	Actual	Budget	Actual	Budget
Personnel	\$255,108	\$284,858	\$282,086	\$284,859
Building/Manse	110,981	114,182	121,034	114,182
Office	15,736	13,450	17,453	13,450
Stewardship/Finance	2,891	3,175	3,258	3,175
Spiritual Development	2,754	4,950	4,186	4,950
Education	4,401	4,200	3,479	4,200
Outreach	17,079	17,775	19,318	17,775
Congregational Support	1,034	2,000	2,969	2,000
Membership				
Development	15,347	15,215	17,711	15,215
Leadership Development	90	1,000	40	1,000
Session	4,449	4,280	4,623	4,280
Total Expense	\$429,870	\$465,085	\$476,159	\$465,086
GAP TO BE CLOSED	(\$7,781)	(\$45,035)	(\$34,023)	(\$29,300)
Available from endowment based on 10 yr average	\$20,541.63		\$17,392.34	\$11,760.87

TRUSTEES FINANCIAL REPORT

Assets:	12/31/2007	12/31/2006	12/31/2005
<i>Liquid Assets - Unrestricted</i>			
Endowment: New Covenant Fund	\$305,113.15	\$289,296.09	\$268,379.73
General Operating - Church of the Pilgrims: Bank of America	21,269.06	44,659.15	23,979.48
Pre-paid Expense	859.12	1,728.47	--
Ruth Floyd Fund: American Funds	135,699.01	128,086.78	110,477.41
Board of Trustees: Bank of America	5,350.57	5,350.57	30,708.57
Wash. Area Comm. Invest.Fund (WACIF)	10,000.00	10,000.00	10,240.00
Universal Insurance Policy	3,373.37	15,529.61	
Petty Cash			300.00
Accounts Receivable	5,000.00		
Unrestricted Liquid Assets Sub-Total	\$486,664.28	\$494,650.67	\$444,085.19
<i>Liquid Assets - Restricted</i>			
Wingo/Haiti Fnd: New Covenant Funds	\$10,922.07	\$10,546.03	\$10,317.85
The Pilgrimage: Bank of America	27,869.18	24,298.38	38,325.61
Pilgrimage Endowment: New Covenant Fund	94,932.95	106,947.51	96,766.45
Capital Campaign: PNC Money Market	146,952.39	121,502.80	
Restricted Liquid Assets Sub-Total	\$280,676.59	\$263,294.72	\$145,409.91
Sub-Total Liquid Assets	\$767,340.87	\$757,945.39	\$589,495.10
<i>Real Estate</i>			
Church Land/Buildings: 2001 P St NW	\$13,248,120.00	\$13,248,120.00	\$13,805,108.00
Church Manse: 4324 Van Ness St. NW	831,560.00	831,560.00	646,870.00
Real Estate Sub-Total	\$14,079,680.00	\$14,079,680.00	\$14,451,978.00
Total Assets	\$14,847,020.87	\$14,837,625.39	\$15,041,473.10

Unaudited figures

NOTES:

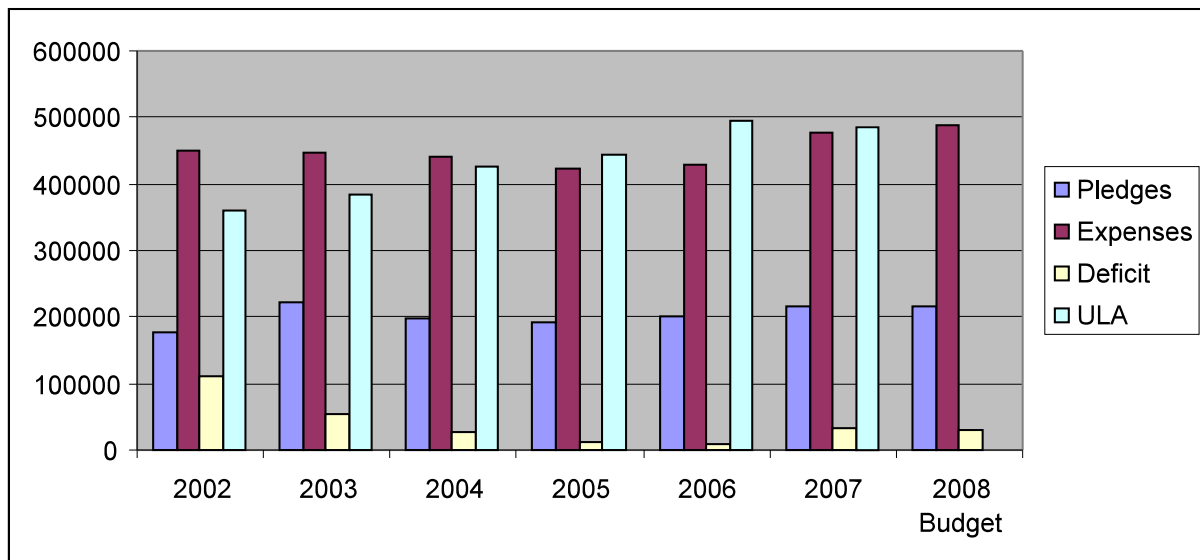
- 1.WACIF is a longstanding loan to the Washington Area Community Investment Fund (originated in 1993) in the amount of \$10,240. They pay annual interest of \$300, but nothing on the principal. WACIF requested and was granted a five-year extension on the loan in May of 2003.
- 2.Real estate value is reported at the full assessment value. The Church has not recorded depreciation expense for either the Church building or the manse, and improvements to both buildings are expensed as they occur.

STATEMENT OF CASH FLOWS

JANUARY 1, 2007 THROUGH DECEMBER 31, 2007

Net Assets of Church of the Pilgrims, January 1, 2007		\$626,699
Pilgrimage Assets January 1, 2007		<u>131,246</u>
Total Net Assets of Church of the Pilgrims, January 1, 2007		\$757,945
Changes in net assets to net cash		
Provided by or (used) in operating activities		
Additions:		
Gifts	\$ 20,000	
Prepaid Pledge Income	6,500	
Post Paid Expense	275	
Capital Campaign	92,500	
Increase in value of Investments Funds	<u>16,603</u>	
TOTAL ADDITIONS	\$ 135,878	
Reductions:		
Operating Loss	\$ 34,023	
Capital Campaign Expenses	67,050	
Change in cash value of insurance policy	12,157	
Net Decrease in restricted accounts	<u>4,808</u>	
TOTAL REDUCTIONS	\$ 118,038	
Net Cash Assets of the Church of the Pilgrims, January 1, 2008		\$644,539
Pilgrimage Assets January 1, 2008		<u>122,802</u>
Total Net Assets of Church of the Pilgrims, January 1, 2008		\$767,341

SIX YEAR TREND OF PLEDGES, EXPENSES, DEFICIT SPENDING AND UNRESTRICTED LIQUID ASSETS



	2002	2003	2004	2005	2006	2007	2008 Budget
Pledges	176,356	222,494	198,156	193,267	200,183	215,000	215,000
Expenses	449,339	446,365	440,935	423,740	429,870	476,159	488,689
Deficit	109,761	53,124	26,359	11,803	7,781	34,023	29,300
ULA	360,833	384,423	425,871	444,085	494,651	486,664	

CAPITAL CAMPAIGN**MITCH FULTON & MARY ESTER**

Our successful capital campaign in 2006, "Looking Forward...by Faith" resulted in 66 very generous pledges that totaled \$417,940. Through your generosity and commitment, our original campaign goal of \$400,000 was exceeded by nearly \$20,000. Our first full year of the three-year pledge period ended in December 2007 with total payments of pledges \$215,005. So far we've completed several capital projects: the replacement of the old smokestack outside of the Bird Room, the repair of the front porches, and re-pointing of the brickwork on the old manse and sanctuary chimney. All three of these projects were identified by the congregation as high priority items within the Capital Campaign. The good news is that each project has come in significantly under budget. Our budget estimates for the three projects, in total, was \$255,000 and our actual expenses for all three was \$88,600, creating a surplus of over \$166,000. The brick re-pointing and chimney repair was by far the largest contributor to being under budget, coming in at a whopping \$139,000 under our estimate. That's really good news as it may well create opportunities for us to realize additional high priority capital projects. Our stretch goal for the campaign had included additional capital projects of replacing the lexan on the stained glass windows and updating the fellowship hall kitchen, both of which are now within reach due to the savings from our first three projects.

Additionally, we have contracted with the architectural firm of the Kerns Group for the design of an ADA compliant rest room, renovation of the 1st floor women's rest room and an ADA compliant entrance off of the playground. The initial drawings from Kerns have been received and have been reviewed. Work on this project should start in the next few months.

Many thanks to the many generous members and friends for making the campaign a big success and for helping to maintain and restore our beautiful and historic building.

Project List	Estimate	Actual	Difference
Repair Porches	\$40,000	\$32,500	-\$7,500
Replace Ed Building Smokestack	\$65,000	\$45,500	-\$19,500
Repoint Brick Chimney & Old Manse	\$150,000	\$10,600	-\$139,400
Repair and Paint Exterior Trim	\$50,000		
First Floor Women's Bathroom	\$26,000		
First ADA	\$100,000		
Campaign Expenses	\$10,000	\$9,787	-\$213
Total	\$441,000		-\$166,613

Income	Pledges	Paid	Balance
	\$417,940	\$215,005	\$202,935

PERSONNEL COMMITTEE

JEANNE MAYER

Each Sunday in worship we have an opportunity to express both our “joys” and our “concerns.” It is indeed a joy to review the activities of the Personnel Committee during the 2007 church year and count the numerous “joys” and nearly nonexistent “concerns.”

First, despite an earlier disappointment, was the realization that our pastor, Jeff Krehbiel, would still be able to take a much-deserved sabbatical leave. Thanks to his creativity and that of our Session members, initial hopes for a 4-month leave were pared to 3 months with generous time allowed for Spanish language immersion in Central America (Guatemala rather than Mexico), followed by visits to the Taize community in France and the Iona community off the coast of Scotland. Jeff’s frequent e-mails, with photographs attached, kept us up to date with his pursuits abroad, including the challenges of one-on-one language instruction and the delights of reconnecting with old friends and meeting new ones.

Assuming a demanding new role, Ashley Goff more than proved her potential for leadership in Jeff’s absence. She and a sabbatical planning committee, reflecting the various interests of the entire congregation, set in motion an inventive sabbatical program that “refreshed” those of us at home, just as Jeff was discovering new perspectives abroad. Many of their innovations were so successful they were incorporated into the church program when Jeff returned, and are still ongoing.

Throughout 2007 all members of the staff—specifically, Rob, Rolando, Marcia, Paul and Jen—not only performed their usual assigned tasks, but cheerfully accepted extra responsibility to assure the sabbatical year’s success.

Our thanks and blessings go to each and every Pilgrim—staff, members, friends—that made the year a truly memorable one and a light load for the Personnel Committee. My thanks, as well, to the committee members themselves: Steve Coxe, Calva Leonard, Lynn Wagner and Stacy Pervall.

THE PILGRIMAGE

KAREN GARRETT

Under the direction of Rev. Ashley Goff and the strong leadership of Pilgrimage Manager Jen McClurg, the Pilgrimage provided an opportunity for numerous visiting groups from across the U.S. to experience and understand urban poverty and homelessness in a new way. The Pilgrimage housed 1200 volunteers in 65 groups—a total of 2800 bed-nights and more than 11,500 volunteer hours. More than half of the groups were junior and senior high school youth groups, and about one-fourth were college groups. Approximately 70% of the groups were affiliated with a faith tradition, with more than 40% of the groups being Presbyterian.

The primary service providers supported by the groups were: National Coalition for the Homeless, Capital Area Food Bank, Christian Community Group Homes, Zacchaeus Kitchen, Martha's Table, Church of the Brethren, D.C. Central Kitchen, So Others Might Eat, Dinner Program for Homeless Women and Washington Parks and People. We hosted groups from 20 states, with many of them coming from Virginia, Pennsylvania, North Carolina, Indiana and Ohio.

The Pilgrimage provided 85 educational workshops for various groups, including the National Coalition for the Homeless *Faces of Poverty* panel (50), workshops on hunger and homelessness (20) and writing workshops and poetry readings led by David Harris (15). Our Lilly Scholar intern, Rob Heppenstall (from Davidson College), provided energy and assistance during the summer months.

Jen McClurg provided outstanding leadership in planning our fifth annual Pilgrimage Service Day, which attracted a record number of members of our congregation and outside supporters. More than 30 people joined us throughout the day to participate in service projects at four locations and take part in the National Coalition for the Homeless panel.

The Pilgrimage Advisory Board, led by Karen Garrett and assisted by Mitch Fulton, Mary Ellen Player, Shera Jenne and Jeff Pittman, continued to provide oversight on financial details and capital improvements, and began a process of determining the future mission of the Pilgrimage.

Matt Boote joined the Pilgrimage's staff at the end of 2007 to replace outgoing manager Jen McClurg. We look forward to his participation, as he brings new insights and energy to the variety of initiatives in place for the coming year. The Pilgrimage looks forward to serving more of those who are serving others in 2008.

CHURCH BUILDING

MITCH FULTON

In 2007, our operating expenses for the church building and manse exceeded our budget by 6% or roughly \$6,800.00. Utility expenses coupled with repairs and replacements were the categories that caused us to exceed our budgeted estimates. Utility costs, specifically electricity, topped our budgeted amount by roughly \$2,700.00 in total.

Having to replace a number of window air conditioners last summer together with some expensive repairs to the plumbing in Fellowship Hall and more than routine maintenance on the boilers were to blame for a budget deficit of approximately \$4,200.00 in this category. All other expenses related to the building and manse were either under budget or very close to the budgeted amounts. This fact is in no small part due to Rolando's vigilance over our aging systems and his keen ability to keep them in very good working order. Rolando continues to be a master at bringing in repair jobs for a fraction of the cost by offsetting contract labor with his own.

Rolando provides me with monthly reports on his accomplishments that certainly show how integral he is to our day to day operations. Some of his behind the scenes activities are the day-to-day operations of our heating and cooling systems. With three boiler rooms to operate in the heating season and our original central air conditioning, together with numerous window air conditioning units, his days tend to be quite full. He routinely paints our spaces, changes our light bulbs, replaces our old electrical fixtures and exit signs and oversees the larger projects covered under the Capital Campaign. He and Paul Reuther continue to do an incredible effort to keep our operating costs as low as possible and they are both well deserving of our thanks and high praise.

CHRISTIAN EDUCATION**BART OOSTERVELD**

As in prior years, both Pilgrims and guests contributed to the success of Christian Education at Pilgrims over the past year. Attendance for adult education classes was more or less stable compared to 2006, as we continued conducting different Sunday morning classes both in the Bird Room and upstairs in the Youth Room. As in prior years, we have tried to have class sequences start simultaneously.

As Anne Womeldorf takes over as the elder responsible for Christian Education, the continued diversity in ideas for adult education and people interested in contributing to teaching the classes stands out as a positive. Shelley Ver Ploeg has become a 'regular' over the past few years, having taught every year since 2005. In addition, Margee Iddings is now a familiar face for classes upstairs. At the suggestion of Jeanne Mayer, we hosted the Interfaith Power and Light program in the Spring of 2007, for a class on environmental stewardship. Other classes in 2007 included those lead by Jonathan Mertz and Jeff Krehbiel on Hospitality, Jeff's 'sabbatical de-brief' on Iona and Taize, Jerry McPike on China, India, and Africa, Gerry Hendershot on Bonhoeffer, and Ashley on Finding your Place at the Table.

For the third year running, we enjoyed stability in the Sunday School teacher group, with Melissa Rosenblatt, Kelsey Krehbiel, Adrienne Tilton and Lynn Wagner all returning to teach in 2007. The group of Pilgrim kids is getting older, with only little Ryan Goff Glennon currently downstairs in the nursery (and, of late, he has been starting to camp out upstairs where the fun is). All children enjoy the friendships and the rhythm of Sunday school, including those times that they join us in worship.

With the help of church intern Rob Heppenstall, Ashley organized the fourth annual Pilgrims Vacation Bible School sequence in late June – among other things, the children painted while blindfolded (as Saul was “blinded by a light”) and made a big mess. There were scavenger hunts, singing, prayer, conversations, and plenty of play. The children enjoyed the three days tremendously.

It has been my pleasure to serve Pilgrims in this capacity and I am grateful for all those people who contributed over the past three years to the success of the Christian Education programs. I would like to thank Ashley especially for all the coordinating work, reminders, and support that she has lent over the past few years. The most frequent complaint about the program I have received has been that people were not able to choose between the class upstairs or in the Bird room as they were interested in both – in my mind, that continues to be a good problem to have!

CONGREGATIONAL SUPPORT

NANCY DAUGHERTY

Pilgrims found many ways to share our light with the world in 2007. We welcomed many new friends and found our own place at God's table. Through many acts of kindness towards each other, our Washington community, and our world, we've shared our gifts and provided care and nurture for one another.

Nearly every member of the congregation has provided food or labor for two of the main social functions of the church, weekly Coffee Hour and monthly Buffet. Coordination of Coffee Hour volunteers is ably handled by Nikki Felix, who also wrangles cashiers for the monthly buffet. Many thanks to cluster leaders for coordinating their teams and all who provided wonderful meals for our enjoyment. Many thanks also to Ruben Canadas, our faithful buffet aide, who makes sure the tables are set and dishes are cleaned and put away. Also to Paul Reuther and Rolando Quintanilla for their support and willingness to fill in when Ruben is away.

Our numbers were sadly diminished by the passing of long time members Carol Seppela, Jeanette Pike, and Chuck and Elinor Dynes. Many Pilgrims assisted with their care and support and with very lovely receptions following the memorial services which celebrated the lives of these special people.

Pilgrims were also witness to the baptisms of Ryan Goff-Glennon and Dorothy Tilton, as well as the confirmation of Martinique Duran Gigax.

In October, Pilgrims hosted the annual meeting of the More Light Presbyterians. Many thanks to Jeffrey Fox for special decorations and to everyone who helped cook, set tables, and clean up.

The women of the church gathered together several times for Circle 4, which has included potluck dinner and fellowship, but no agenda and no church business! Young and youngish adults of the church gathered for dinner at the home of Jeff & Cheryl Krehbiel and at the Brickskellar for Theology on Tap. Monthly meetings of the Friday Club, with lunch provided by Pat Goeldner, continue, as do gatherings of the Northern Virginia Supper Club and the Gay and Lesbian Fellowship.

While the members of the church take on many responsibilities for church life, our efforts are constantly supported by the wonderful church staff--Marcia Mapp, Rolando Quintanilla and Paul Reuther--as well as our dedicated clergy--Jeff Krehbiel and Ashley Goff.

MEMBERSHIP DEVELOPMENT

JONATHAN MERTZ

It has been a year of trying new forms of outreach and hospitality while continuing other traditions. We responded to the social networking sites on the internet by joining both Facebook and Myspace. Both sites are very popular with high school, college students, and young adults– although anyone of any age is able to join. Our Myspace is open to the public. Check it out at:

www.myspace.com/churchofthepilgrims

You have to be a member of Facebook to see our Facebook group. Joining is free and fairly simple. After you join, search for “Church of the Pilgrims” in the groups section. And then join the group!

A new group of volunteers, called "The Twelve," was organized in 2007. Members volunteer to be the greeter at the front door every Sunday for a month. Having the same Pilgrim at the door every Sunday for a month allowed them to recognize returning visitors and make their welcomes more personal. The volunteers report that it has worked well.

2007 was also the Fifth annual Arts and Crafts Festival. The results were mixed. Although the number of artists, visitors and persons climbing the tower were up, most artists reported a decrease in their sales from previous years. Although disconcerting, this seemed to be the case with many other local arts and crafts festivals.

Pilgrims also had a large contingent participate in the Pride Parade and volunteer at the church booth at the Pride Festival.

Thank you for volunteering to usher, greet visitors, work at the Arts Festival and Pride, create ads (Gerry!), and for upholding Pilgrim's great tradition of hospitality and welcome. We are constantly hearing from visitors about our friendly and inviting congregation.

THANK YOU EVERYONE!

OUTREACHBETTY J. RUDOLPH

The Church of the Pilgrims offers many opportunities for its members and friends to live out their faith in service to the community in which we live, and beyond. The participation of numerous Pilgrims and friends, under the leadership of Rev. Jeff Krehbiel and Rev. Ashley Goff, has enabled us to be a sign and a foretaste of the Kingdom of God by seeking peace and justice and making many positive contributions to the lives of our neighbors in the Dupont Circle community, the city at large, and around the world.

Washington Interfaith Network In 2007, Pilgrims was an active participant in the Washington Interfaith Network. WIN is a nonpartisan, interfaith organization of 50 congregations which organizes people and money to fight for peace with justice in low income DC neighborhoods by putting pressure on DC politicians and agencies. In the 2006 Democratic Primary Election, WIN demonstrated its power by increasing voter turn out in targeted precincts by 15%. In 2007, WIN actions resulted in the city pledging significant new annual revenue for affordable housing, permanent supportive housing for the homeless, and neighborhood reinvestment. Under the leadership of Jean Stewart, a number of Pilgrims supported several “accountability actions” with DC Mayor Fenty and the City Council Members about their commitment to implement WIN’s “Vote Neighborhoods First” agenda. In addition, Pilgrims supported several Ward 1 housing strategy initiatives with All Souls, St. Stephens and other local WIN partners.

Ministry to the Homeless The church’s primary hands-on outreach program is Open Table (see below). The church also sponsored a homeless shelter through the Georgetown Ministries Center (GMC) for a week in December, with approximately 10 homeless guests staying at the Pilgrimage. Mary Lib Pate provided leadership in coordinating this program, assisted by Jack Womeldorf. Pilgrims brought breakfast foods, hot meals for dinner, and visited with the guests. Pilgrims also supported homeless men and women by collecting gently used winter coats over three Sundays for GMC clients.

Pilgrims provided financial assistance and manual labor to support the building of a Habitat for Humanity home in DC. Led by Mary Lib Pate who organized this initiative through the Presbytery’s Mission Coordination Committee and assisted by Pilgrim Zach Wilks, Pilgrims turned out 10 volunteers to assist in building the home in November.

Pilgrims provided financial support for the National Coalition for the Homeless (NCH) Presbyterian Homelessness Fellows Program, which brought several dedicated Presbyterian college students to Washington, DC for a paid summer fellowship with NCH to research and analyze the rising trends of the criminalization of homelessness and hate crimes/violence against homeless persons.

International Outreach Throughout the year, Pilgrims partnered with other Presbyterian churches, organized by the Presbytery’s Peacemaking Committee, as well as local interfaith groups, such as the Darfur Interfaith Network, a local gathering of churches, synagogues and mosques working with the Save Darfur Coalition, to participate in monthly vigils at the Sudanese Embassy

calling for an end to the genocide in Darfur. Pilgrims also partnered with the New York Avenue Presbyterian Church and the National Capital Area Presbytery's Peacemaking Committee to sponsor a visit to Washington, DC by the Rev. Dr. Hector Mendez from Havana, Cuba.

Other Local Hands-On Outreach Through several special offerings, Pilgrims supported a number of local organizations: The Supporting Fund at Ingleside (a Presbyterian retirement home in NW Washington D.C.); Hope and a Home, which serves youth and their families in the Columbia Heights and Shaw neighborhoods of D.C.; Food and Friends; the National Coalition for the Homeless; and So Others Might Eat. Other local hands-on outreach included our membership and participation in the Downtown Cluster of Congregations, Community Council for the Homeless at Friendship Place (CCH/FP), Iona Senior Services, and More Light Presbyterians/Open Doors. Jack Womeldorf served on the board of the Downtown Cluster and Pat Goeldner served on the board at CCH and the Iona Member Council. In 2007, we contributed financially to these organizations.

OPEN TABLE

DELANIA HARDY

Successes and Highlights

- Quakers continue to run the first Sunday of the month and offer free haircuts when the weather permits. Our guests appreciate this special service.
- Overall quality of food has improved.
- We have a routine cook in place for each week.
- Toiletries available on an on-going basis and some special items often available (t-shirts, underwear, socks)

Overall

We continue to make the meals more healthful and tasty. We have maintained a corner on having soap, razors, t-shirts, etc., available and the guests appreciate this. The advent offerings are an asset for our supplies and we are grateful for the generous contributions from the congregation. We should be pleased with the progress of better service and greater stability to the program's schedule.

Still Needed

We hope to offer some occasional health services to our guests but having it available on the weekend has been a challenge.

WORSHIP & SPIRITUAL DEVELOPMENT

JEAN STEWART

Jeff Krehbiel's Sabbatical brought several changes into our worship service, thanks to the Sabbatical planning group headed by Ashley Goff. Specifically, we followed a theme of Connections and Clarity, including storytelling by individual Pilgrims about their experiences of connection and clarity in their lives as Pilgrims. These stories were told aloud in worship, and in writing in the "The Pilgrim". This was such a positive experience that we continued the practice in Advent, with storytelling reflecting the Advent theme of Dreaming of a World Made New. Pilgrims children also participated, with stories about the symbolic gifts they laid on the Advent wreath as the Advent candles were lighted each Sunday. Kathy Keler designed wonderful graphics to symbolize each theme.

Jeff's Sabbatical also brought a one-day spiritual retreat, led by a new/old friend, retired pastor Margee Iddings. By popular demand, Rev. Iddings held another one-day retreat in the Fall, focusing on prayer and using our labyrinth.

After Jeff's return, we experimented for several Sundays with Taize-type worship services held before the regular service. Under the leadership of our Music Director, Rob Passow, more music was introduced in our regular service from both the Taize and the Iona communities that Jeff visited. Rob also took a course on the music of Iona, and he has brought to the choir and to the congregation many of these songs to enrich our spiritual life and worship.

In 2007, we adopted the practice of putting out the labyrinth after the service on the last Sunday of the month for anyone to use, after worship or after coffee hour.

Planning for worship during Advent was conducted by specific invitation to a number of Pilgrims, modeling the approach used for the Sabbatical planning group. This proved to be more effective in getting varied input from different generations and viewpoints than the previous method of open invitation, which tended to bring just the same few people.

We held special worship services on Ash Wednesday, Maundy Thursday, and Good Friday, following the pattern that we have used in previous years, as these services continue to provide meaningful worship experiences. Communion was served every Sunday during Lent and for the Ash Wednesday and Maundy Thursday services. A special candlelight service featuring music and the reading of lessons was held on Christmas Eve.

We continue to have wonderful baptism experiences in which the entire congregation gathers at the font to welcome the newly baptized to the community, and during which everyone has the opportunity to privately renew our baptism vows as we are all sprinkled with water from the font.

DUPONT PILGRIMS GALLERY: “ART FOR THE SPIRITUAL JOURNEY” G. HENDERSHOT

The Dupont Pilgrims Gallery is a community outreach mission of the Church of the Pilgrims. The Gallery shows “Art for the Spiritual Journey” by artists from the Washington DC metropolitan area. Its purpose is to provide a venue in the Dupont Circle arts district for artists who are not represented by commercial galleries, and who might otherwise find it difficult to show their work to the public. Artists can show and sell their work at low cost—the gallery takes no commission on sales. Dupont Pilgrim’s art shows usually have a religious, spiritual, or social justice theme.

After a late start, the year began in April with a show of works by artist Martina Martin. The accompanying picture shows Martin at the opening reception for her show with her mother and sister. Martin was studying for a Master’s in Divinity from the Howard University Divinity School, and her work reflects her interests in religion and the African-American experience.



From May through July, the Gallery showed Lois Wilson’s mixed media series titled “Through the Window: Insights into the Spirituality of AIDS.” Wilson produced the series as part of her work toward a Master’s of Divinity in Religion and the Arts at Wesley Theological Seminary. Each piece is based on the story of a person with HIV/AIDS with whom she worked in a therapeutic story-telling program. The show was listed as an ancillary event in the program for Capital Pride Week.

In August and September, Mike Martinez showed his oil colors of street scenes in the neighborhoods of Dupont Circle, Logan Circle, and Capitol Hill. Mike, now 65 years old, came out as a gay man when he was 54. Making up for his late arrival in the gay community, he set out to record the DC neighborhoods that are popular with gay men.

In October and November the Gallery showed photo-realistic portraits of homeless people by Tammy DeGruchy, part of a series commissioned and owned by the National Coalition for the Homeless, which has its headquarters at Pilgrims. In addition to the portraits, the show included poems by David Harris, the Pilgrimage’s “poet in residence.” Harris is a formerly homeless man now in supportive housing. He is the author of many of the poems in a recently published book of poetry from *StreetSense*, the DC newspaper by and about homeless people.

Beginning in December and continuing through January 2008, Nita Ng showed her small batik works. Ng is from Malaysia but visited the US in 2007 to study yoga and meditation with Fr. Thomas Ryan, an internationally known leader in that field. Ng is a Christian and many of her works have a religious or spiritual orientation, but she is also influenced by her Chinese cultural heritage. The batik process uses a wax resist technique to control colored dyes—as an economy move Ng melted wax from used votive candles she collected from Catholic churches in Malaysia; only later did she realize that her method adds another spiritual dimension to her work.